



# Active Learning Made Easy With Pivot Interactives

**Pivot Interactives**

[PivotInteractives.com](https://PivotInteractives.com)

## Eric Rhoades

- 30 years as a science educator in Virginia
  - Middle and high school teacher
  - Physical Science, Biology, and Chemistry
  - District Science Coordinator
  - Director of Science VDOE
- B.S. Biology, M.Ed. Ed Leadership
- Partnership Manager



## Problem:

Phenomena-based active learning is most effective, but **limited by classroom constraints**.

## Solution:

**Phenomena-based, active learning** through interactive video

60-Day Free Trial



# With Pivot Interactives,



easily  
go from...

learning limited by  
classroom constraints

curriculum designed  
for memorization of  
disconnected facts

passive learning

feedback limited  
by teacher time

being vulnerable to disruption  
(absences, weather, remote learning)

to...

unrestricted exploration  
of phenomena,

activities embedded  
with science  
and engineering practices,

active learning  
& engagement,

continuous,  
personalized feedback,

being effective for face to face  
and adaptable for remote,

so  
that...

students see the  
relevance of science.

students can  
DO science.

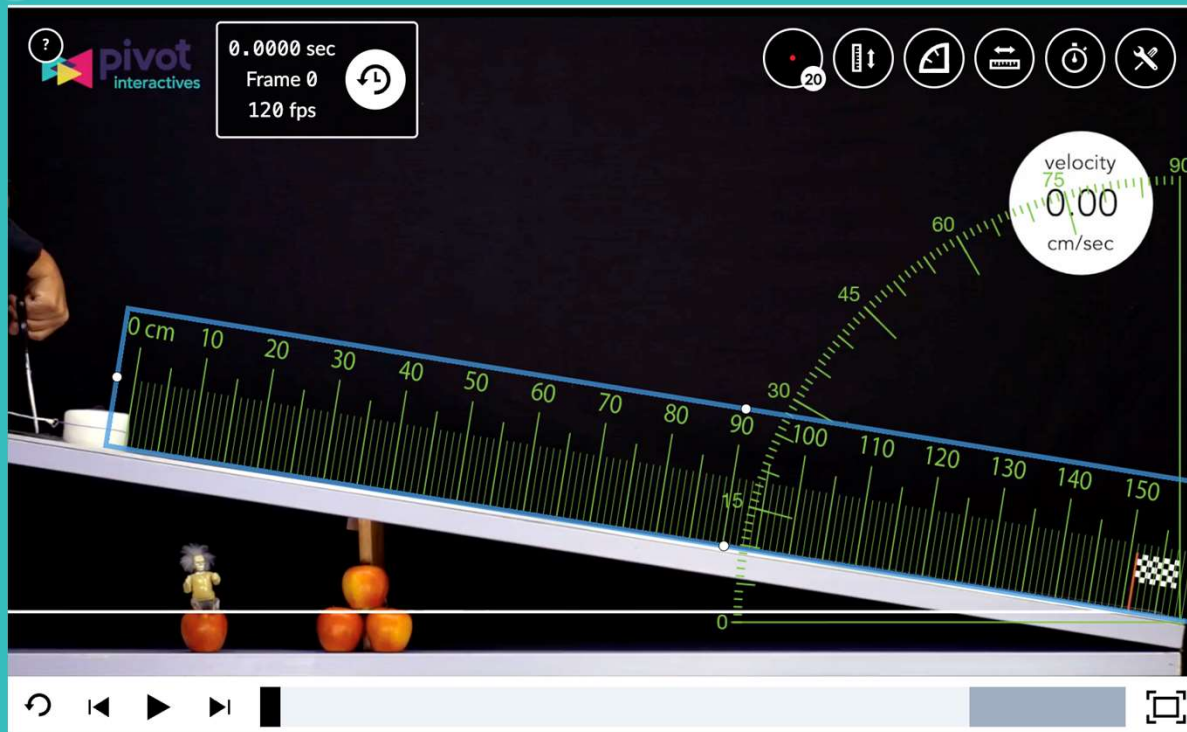
students learn science  
efficiently and effectively.

students develop self  
awareness and confidence  
while learning science.

learning science can  
happen anytime, anywhere,  
for any student.



# What is Interactive Video?



Through signature interactive videos in Pivot Interactives, teachers can engage students with **typically inaccessible or unrealistic, authentic phenomena** to see qualitatively AND measure quantitatively.

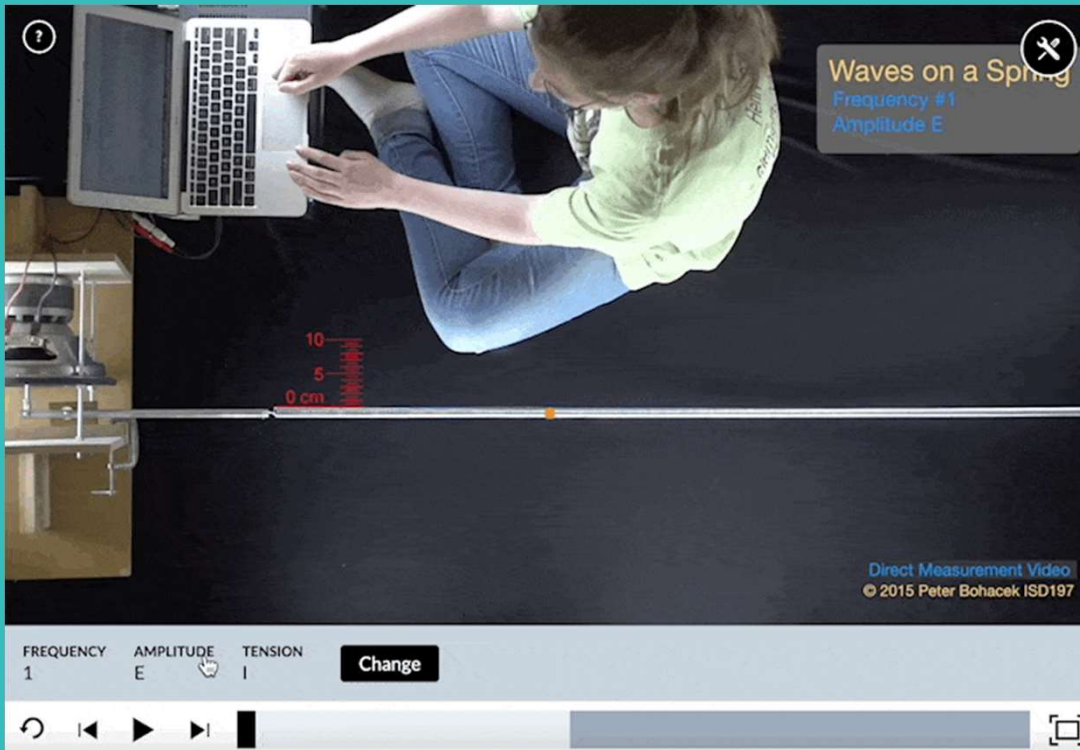
## Introduction to Constant Acceleration

We'll learn to apply a formula to this situation and use a graph to find the acceleration.





# What is Interactive Video?

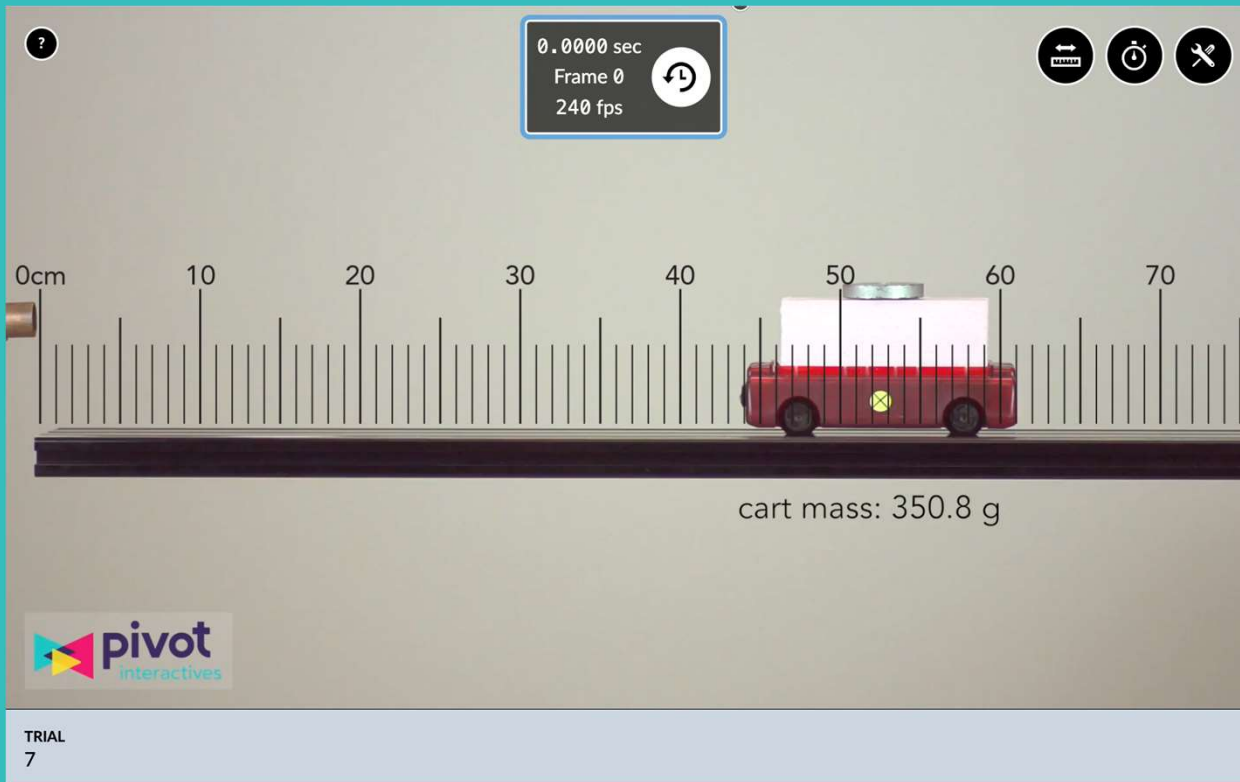


Through signature interactive videos in Pivot Interactives, teachers can provide their students with **unrestricted exploration of authentic phenomena** and seamlessly embed the science practices in their lessons.

Properties of Transverse Mechanical Waves - Students explore relationships between mechanical wave properties. With over 75 trials, students can easily implement experimental design, collaboratively or independently.



# What can the platform do?



With Pivot Interactives activities, students receive **continuous, personalized feedback** and are **actively engaged** with their learning.

The 100% customizable activities are crafted with powerful features, like randomized questions, automatic feedback & autograding, data tables, and robust graphing tools.



# Where does Pivot fit into the classroom?

## Introduction:

- Building a model
- Sensemaking
- Guided Inquiry

## Application:

- Testing a model
- Practice
- Traditional “lab”
- Fluency building

## Assessment:

- Testing understanding
- Less feedback provided

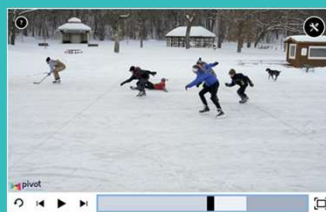
### Intro to the Mole Concept



### Daphnia and Chemicals



### How fast is that skater?



Pivot Interactives is not just labs!

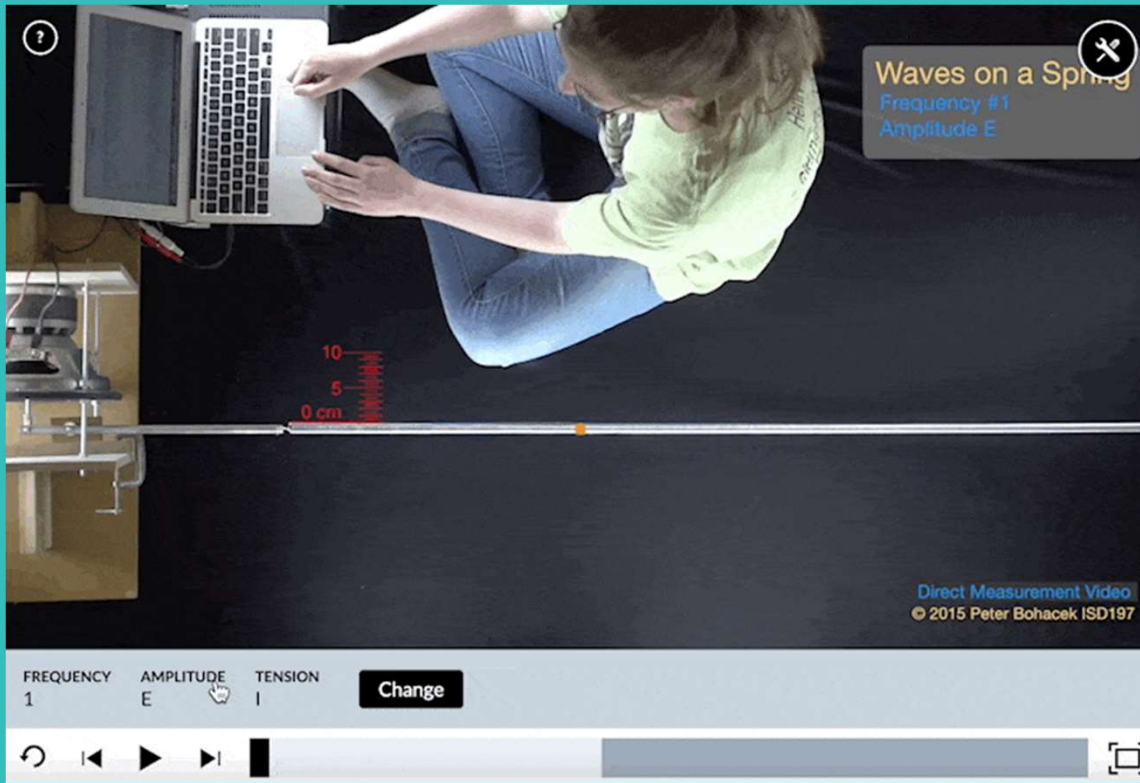
Phenomena, active learning, and the science practices throughout the learning cycle!

The science practices ooze out of our activities!





# What does it look like in the classroom?



**Collaboration** is simple to implement with Co-Lab in Pivot Interactives. Students have open exploration, design experiments, and walk through the **science practices**, without the typical constraints, like time, money, resources, teacher experience level, using various platforms, etc

Properties of Transverse Mechanical Waves - Students explore relationships between mechanical wave properties. With over 75 trials, students can easily implement experimental design, collaboratively or independently.



# Other phenomena: Sensors

Stream data with Pasco and Vernier Bluetooth sensors right into activities.

- Conduct “hands-on” data collection
- Place that data right next to the content questions
- Easy way to collect real data as a class demo, groups, or individuals

[Demo Link - Graph](#)

	Time		Temperature	
	s	variable	°C	variable
	Capture		● 27.979	Zero
1				
2				
3				
4				
5				

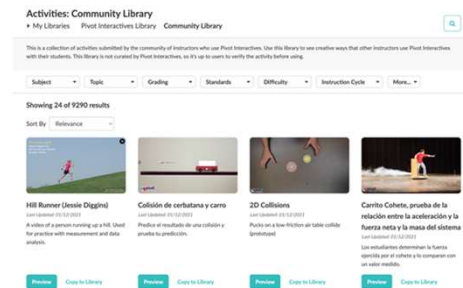


# Instructors can create and collaborate!

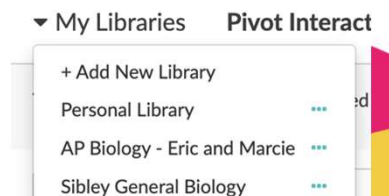
Everything on the platform is editable!

- Change question properties:
  - Attempts, feedback, autograding, etc.
- Use hints to include additional scaffolding
- Pre-populate data tables and graphs to guide data collection
- Embed additional content
  - Instructional videos, GoogleDocs, etc.

Check out the [Community Library](#) to see what other teachers across the Pivot Interactives Network.



Use shared libraries to work with teachers at the same school or subject area.






# Schoology and Canvas Integration with LTI

- LTI 1.3 integration
- Students interact with Pivot through their Schoology accounts.
- Teachers will still write, edit, and grade activities within Pivot Interactives
- After grading, grades will pass to Schoology gradebook

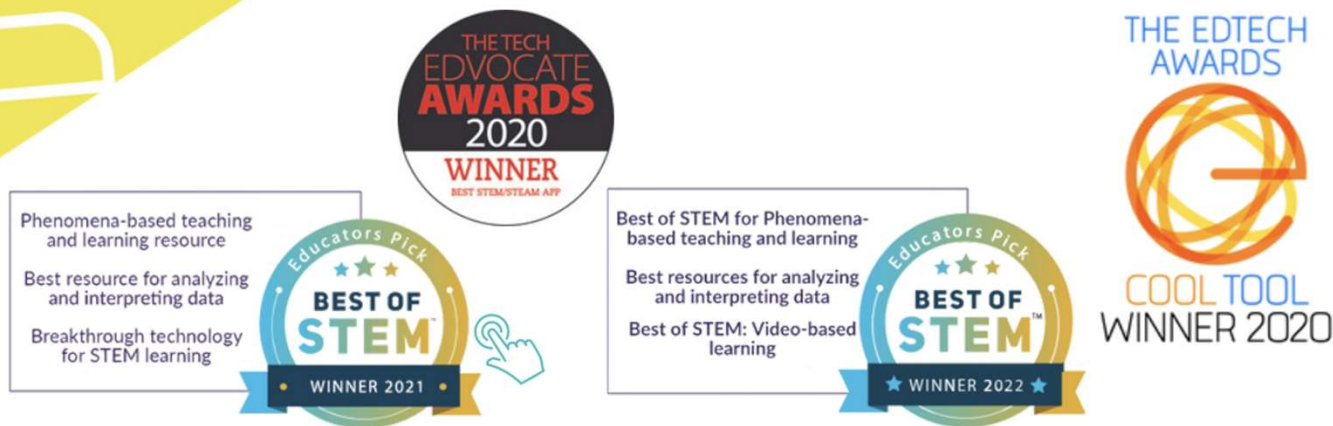




## Additional Features

- Covers all science subjects
  - 500+, 100% customizable, activities
  - Syncs with Bluetooth data sensors
  - Shared teacher libraries
  - Students video upload
  - PhET.iO simulations integration
  - Scaffolded instruction
  - LMS Integration
  - Rostering and SSO
  - Standards alignment crosswalks (AP, IB, NGSS, or other state standards)
  - Robust reporting dashboard
  - Co-Lab™ groups for student collaboration
  - Streamlined grading tools
- 





What are others saying about Pivot Interactives?

*"You've made me a better teacher and helped my students to learn at high levels." - Ryan P.*

*"Your attention to our needs as science teachers is incredibly valuable and so rare." - Kate E.*

*"This is the most lovingly crafted, expertly executed educational software I have ever encountered." - James K.*

*"I love that your product gives my students access to high-quality experiments that emphasizes accurate data collection, visualization, and analysis, that I can customize the assessments given to my kids, that autograding provides students with instant feedback and can help them get back on track if they're struggling, and that I have a simple tool where they can easily find all of their assigned labs in the same place. This thing works like a dream." - Claire S.*

# Additional Questions?

Contacts:

- [Eric Rhoades](#) – Pivot Partnerships

60-Day Free Trial

